

**OUTLINE PLUMBING SPECIFICATION  
GENERAL**

1. CONTRACTOR SHALL BE RESPONSIBLE FOR VISITING THE SITE AND VERIFYING JOB CONDITIONS PRIOR TO SUBMITTING A BID.
2. THE PLUMBING CONTRACTOR SHALL EXAMINE THE DRAWINGS OF ALL OTHER TRADES AND COORDINATE THE INSTALLATION OF PLUMBING SYSTEMS WITH OTHER BUILDING SYSTEMS.
3. THE PLUMBING CONTRACTOR SHALL INSTALL COMPLETE AND OPERATING PLUMBING SYSTEMS, INCLUDING DOMESTIC WATER, SANITARY WASTE, AND SANITARY VENT CONNECTIONS TO ALL EQUIPMENT REQUIRING SUCH CONNECTIONS, REGARDLESS OF THE INSTALLING TRADE.
4. ALL PLUMBING SYSTEMS, INCLUDING EQUIPMENT, MATERIALS, AND METHODS OF INSTALLATION, SHALL COMPLY WITH THE CURRENT EDITION OF THE KENTUCKY STATE PLUMBING CODE.
5. SMOKE TEST PIPING IN ACCORDANCE WITH THE KENTUCKY STATE PLUMBING CODE AND THE REQUIREMENTS OF THE LOCAL PLUMBING INSPECTOR.
6. THE PLUMBING CONTRACTOR SHALL ARRANGE AND PAY FOR ALL PERMITS AND INSPECTIONS, AND SHALL LEAVE ALL WORK EXPOSED UNTIL INSPECTED AND APPROVED.

**PLUMBING FIXTURES AND EQUIPMENT**

1. FURNISH NEW AND UNUSED PLUMBING FIXTURES THAT COMPLY WITH THE KENTUCKY STATE PLUMBING CODE AND APPLICABLE FEDERAL REGULATIONS.
2. PROVIDE BACKING FOR WALL MOUNTED FIXTURES. USE ARM-TYPE CARRIERS, OR KNEE BRACES TO SECURELY SUPPORT WALL MOUNTED FIXTURES.
3. CAULK WALL MOUNTED FIXTURES TO THE WALL WITH SILICONE CAULKING.
4. FASTEN COUNTERTOP DROP-IN FIXTURES TO COUNTERTOPS WITH CLIPS AS RECOMMENDED BY THE FIXTURE MANUFACTURER. SEAL JOINTS BETWEEN THE FIXTURE RIM AND THE COUNTERTOP WITH SILICONE SEALANT.
5. INSTALL PLUMBING FIXTURES IN ACCORDANCE WITH ADA GUIDELINES FOR ACCESSIBILITY IN BUILDINGS AND FACILITIES.

**SANITARY WASTE AND VENT PIPING**

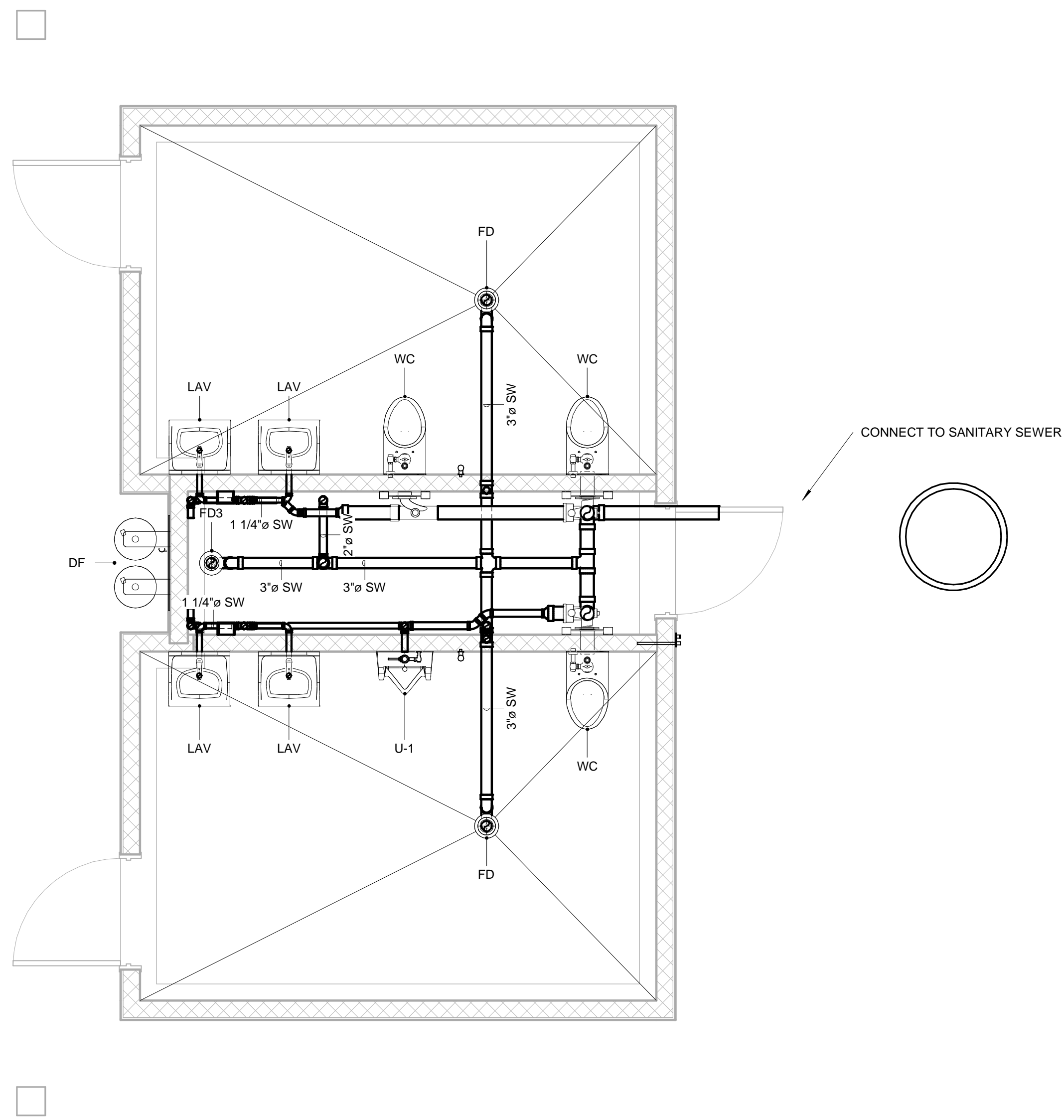
1. SANITARY WASTE AND VENT PIPING MAY BE PVC, GASKETED BELL & SPIGOT CAST IRON, OR NO-HUB CAST IRON IN ACCORDANCE WITH THE KENTUCKY STATE PLUMBING CODE.
2. SUPPORT ABOVEGROUND SANITARY WASTE AND VENT FROM BUILDING STRUCTURAL MEMBERS AND PROVIDE SUPPLEMENTARY STRUCTURAL SUPPORTS AS REQUIRED TO ADEQUATELY SUPPORT THE PIPING.
3. FLASH AND COUNTER FLASH VENTS THROUGH THE ROOF USING MATERIALS AND METHODS IN COMPLIANCE WITH THE KENTUCKY STATE PLUMBING CODE.
4. SANITARY WASTE AND VENT PIPING INSTALLED IN RETURN AIR PLENUMS SHALL HAVE A FLAME SPREAD INDEX OF 25 OR LESS, AND A SMOKE DEVELOPMENT INDEX OF 50 OR LESS, OR BE WRAPPED WITH PLENUM WRAP INSULATION EQUAL TO FIREMASTER PLENUMWRAP TO ACHIEVE THE SPECIFIED FLAME SPREAD AND SMOKE DEVELOPMENT INDICES.

**DOMESTIC WATER PIPING**

1. DOMESTIC HOT AND COLD WATER PIPING SHALL BE TYPE L COPPER WITH SOLDERED, BRAZED, OR SWAGED (PRESS-FIT) JOINTS.
2. INSTALL ANGLE STOPS FOR DOMESTIC WATER SUPPLY CONNECTIONS TO ALL FIXTURES.
3. INSTALL SHUT-OFF VALVES AT PLUMBING EQUIPMENT ITEMS.
4. ALL DOMESTIC WATER PIPING SHALL BE INSULATED WITH FIBERGLASS INSULATION WITH VAPOR BARRIER.
5. SECURELY SUPPORT DOMESTIC WATER PIPING FROM BUILDING STRUCTURAL MEMBERS. PROVIDE SUPPLEMENTARY STRUCTURAL MEMBERS AS REQUIRED TO ADEQUATELY SUPPORT THE PIPING.

**PIPE INSULATION**

1. INSULATE DOMESTIC HOT AND COLD WATER PIPING WITH 1" THICK FIBERGLASS INSULATION WITH FIRE-RESISTANT VAPOR BARRIER AND SELF-ADHESIVE LONGITUDINAL LAP JOINTS.
2. TAPE ALL TRANSVERSE JOINTS WITH MATCHING TAPE. FINISH FITTINGS WITH PVC INSULATION COVERS.
3. DO NOT INSULATE FLANGES OR UNIONS. INSULATE VALVE BODIES WITH MITERED SECTIONS OF PIPE INSULATION.
4. FINISH ALL RAW ENDS WITH INSULATING CEMENT.



① 1 - Sanitary Piping  
3/8" = 1'-0"

**ABBREVIATIONS**

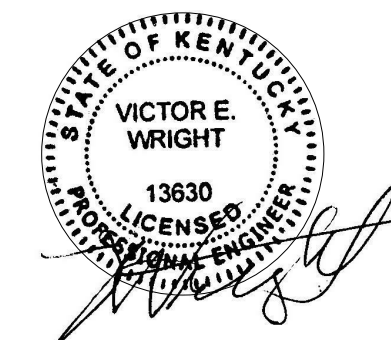
- BFP BACKFLOW PREVENTER
- CW CITY WATER
- CAS COMBUSTION AIR SUPPLY
- CAE COMBUSTION AIR EXHAUST
- CC CHAIR CARRIER, CLOSET CARRIER
- CO CLEAN-OUT
- DCW DOMESTIC COLD WATER
- DCVBFP DOUBLE-CHECK BACKFLOW PREVENTER
- DHW DOMESTIC HOT WATER
- FD FLOOR DRAIN
- FG FUEL GAS
- HB HOSE BIBB
- NG NATURAL GAS
- OFD OVERFLOW DRAIN
- OSD OPEN SITE DRAIN
- RD ROOF DRAIN
- RH ROOF HYDRANT
- RPZBFP REDUCED PRESSURE ZONE BACKFLOW PREVENTER
- SV SANITARY VENT
- SW SANITARY WASTE
- TP TRAP PRIMER
- VB VACUUM BREAKER
- WH WALL HYDRANT

- ⌋ BALL VALVE
- ⌋ BUTTERFLY VALVE
- ⌋ CHECK VALVE
- ⌋ GATE VALVE
- ⌋ GLOBE VALVE
- ⌋ PLUG VALVE/GAS COCK
- ⌋ T&P RELIEF VALVE

○ LEGEND - PLUMBING  
1/4" = 1'-0"

**PLUMBING FIXTURE SCHEDULE**

Type Mark	Description	Type	Type Comments	Manufacturer	Model	FAUCET
CC-1	Right hand, horizontal adjustable Hub and Spigot Fixture Carrier	MC-10R-HS		MIFAB	MC-10R-HS	
CC-2	Vertical Water Closet Carrier	MC-13R-HS		MIFAB	MC-13R-HS MC-13-2-HS	
CC-3	Vertical Water Closet Carrier	MC-13L-HS		MIFAB	MC-13L-HS MC-13-2-HS	
DF	"Hi-Lo" design allows for twice the users as regular fountains and suits the needs for various user heights.	1011	Placed securely in multiple locations without taking up excess space	Haws Corporation 1455 Kleppe Lane Sparks, NV 89431	10011	
FD	FLOOR DRAIN	6" Strainer - 3" Drain	PROVIDE TAP FOR TRAP PRIMER	ZURN	Z415	
FD3	3" FLOOR DRAIN	5" Strainer - 3" Drain	PROVIDE TAP FOR TRAP PRIMER	ZURN	Z415	
FV-1	AquaVantage 'AV' Exposed Urinal Flush Valve	Z6003AV		Zurn Industries, LLC.	Z6003AV	
FV-2	Exposed, Battery Powered, Sensor Operated G2® Model Water Closet Flushometer for Floor Mounted or Wall Hung Top Spud Bowls	G2 Optima Plus 8111/1.28		Sloan Valve Company	G2 Optima Plus 8111/1.28	
HB1	WALL HYDRANT	3/4" Inlet	Satin Nickel Plated	Prier	C-634	
HB2	Wall Faucet	-C12 Inlet Connection	1/2 Female Solder x 3/4 Male Solder Inlet	Zurn Industries, LLC	Z1341XL-C12	
LAV	Wall-Hung Vitreous China Lavatory	American Standard - Lucerne Lavatory - 0355.012		American Standard	0355.012	LF1
LF1	'SELECTRONIC' Electronic 'No Touch' Faucet, Single Application	6056.105.002		American Standard	6056.105.002	
U-1	'WASHBROOK FloWise™' High Efficiency Urinal, wall hung for flush valve, vitreous china, wash out flush action, 0.125 GPF per flush, wall hanger, 2" (50mm) outlet, 3/4" (19mm) top spud.	6590.125		American Standard Brands	6590.525	FV-1
WC	Afwall Bowl Normal Height Top Spud	2294.011EC	PROVIDE WHITE OPEN FRONT SEAT	American Standard	2294.011EC	FV-2



**REVISIONS**

- △
- △
- △
- △
- △
- △

**DOCUMENT PHASE**

CONSTRUCTION  
DOCUMENTS  
DATE ISSUED  
8/15/2017

SHEET NAME  
SANITARY  
SEWER PLAN

**P1.0**