



EXHAUST FAN SCHEDULE

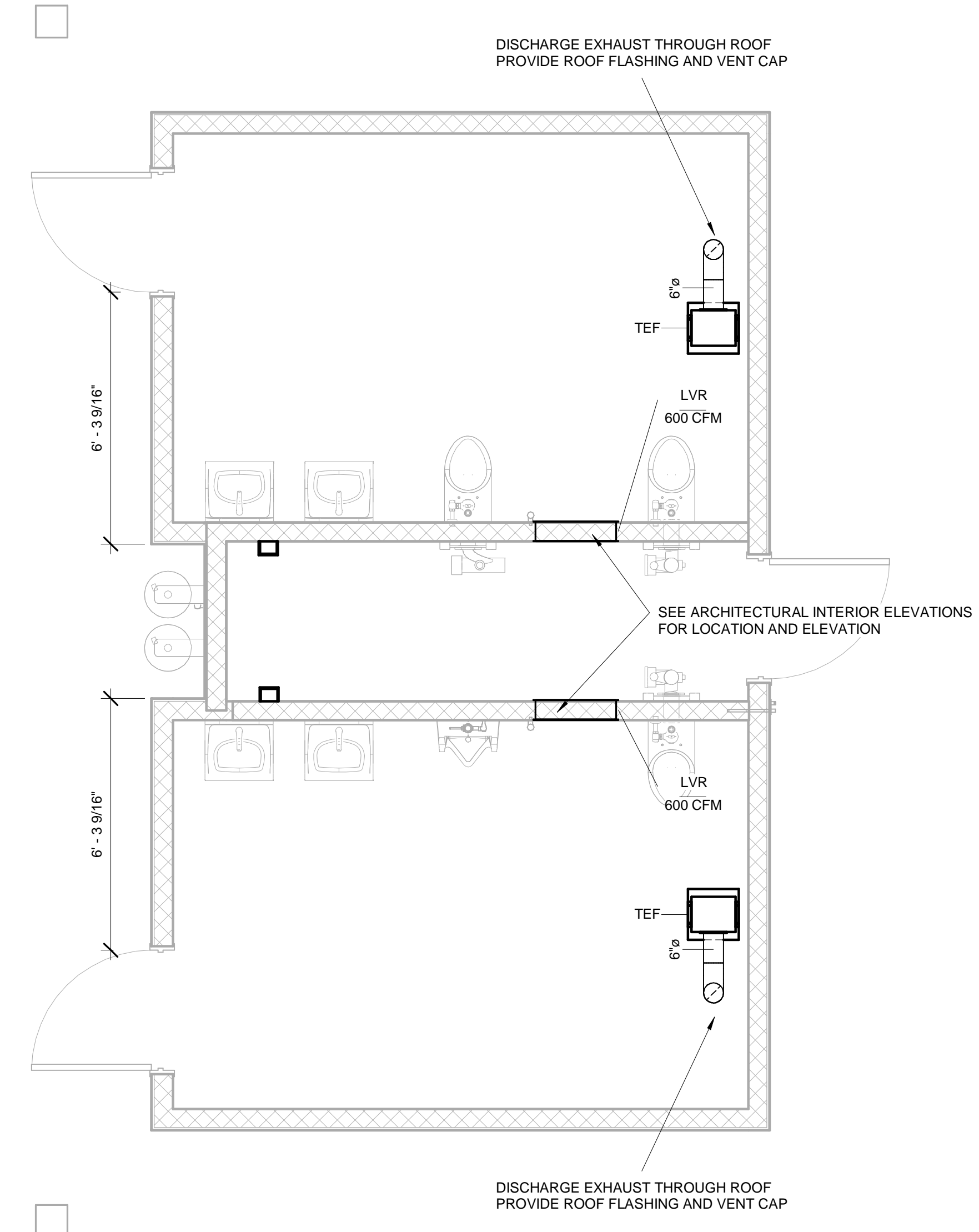
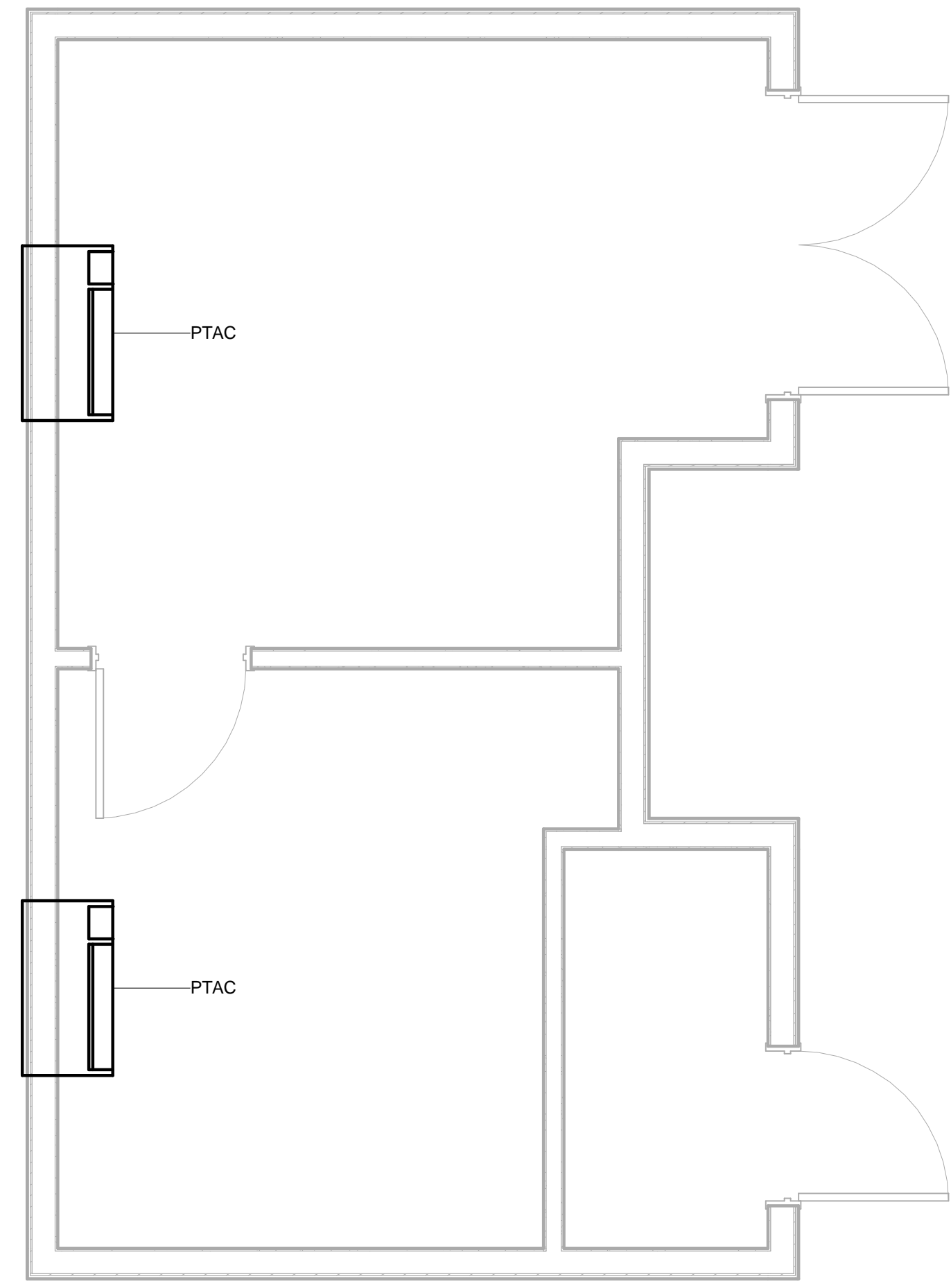
Type Mark	Description	Family and Type	Manufacturer	Model	Air Flow Rate	Static Pressure	Sones	Voltage
TEF	Model SP is available in both deluxe and premium designs. The premium design offers the lowest sound and insulated housing. The deluxe design has low sound and is a low profile unit.	Ceiling-Exhaust-SP-A: SP-A190	Greenheck	SP-A190	150 CFM	0.13 in-wg	2	120 V
TEF	Model SP is available in both deluxe and premium designs. The premium design offers the lowest sound and insulated housing. The deluxe design has low sound and is a low profile unit.	Ceiling-Exhaust-SP-A: SP-A190	Greenheck	SP-A190	150 CFM	0.13 in-wg	2	120 V

**MECHANICAL (HVAC) GENERAL NOTES:**

- CONTRACTOR SHALL BE RESPONSIBLE FOR VISITING THE SITE AND VERIFYING JOB CONDITIONS PRIOR TO SUBMITTING A BID.
- THE HVAC CONTRACTOR SHALL EXAMINE THE DRAWINGS OF ALL OTHER TRADES AND COORDINATE THE INSTALLATION OF HVAC SYSTEMS WITH OTHER BUILDING SYSTEMS.
- THE HVAC CONTRACTOR SHALL INSTALL COMPLETE AND OPERATING HVAC SYSTEMS, INCLUDING BUT NOT LIMITED TO HVAC CENTRAL EQUIPMENT, SHEET METAL AIR DISTRIBUTION SYSTEMS, EXHAUST SYSTEMS, NATURAL GAS PIPING SYSTEMS, CONDENSATE DRAIN SYSTEMS, AND TEMPERATURE CONTROL SYSTEMS.
- HVAC SYSTEMS SHALL COMPLY WITH THE 2006 INTERNATIONAL MECHANICAL CODE AS ADOPTED AND ENFORCED BY THE COMMONWEALTH OF KENTUCKY, AND LOCAL AUTHORITIES HAVING JURISDICTION.
- HVAC SYSTEMS, EQUIPMENT, AND COMPONENTS SHALL COMPLY WITH THE 2009 INTERNATIONAL ENERGY CONSERVATION CODE AS ADOPTED AND ENFORCED BY THE COMMONWEALTH OF KENTUCKY.
- NATURAL GAS PIPING SHALL COMPLY WITH THE 2006 INTERNATIONAL FUEL GAS CODE AS ADOPTED AND ENFORCED BY THE COMMONWEALTH OF KENTUCKY, AND LOCAL AUTHORITIES HAVING JURISDICTION.
- SHEET METAL DUCT SYSTEMS SHALL COMPLY WITH SMACNA DUCT CONSTRUCTION STANDARDS.
- MECHANICAL DRAWINGS ARE SCHEMATIC IN NATURE AND SHALL NOT BE SCALED TO DETERMINE SIZES OR LOCATIONS OF HVAC SYSTEM COMPONENTS. FIELD VERIFY SIZES, ELEVATIONS, AND LOCATIONS OF EXISTING BUILDING COMPONENTS AND NEW COMPONENTS FURNISHED AND INSTALLED BY OTHER TRADES AND CONTRACTORS. PROVIDE FITTINGS AND OFFSETS, AND LOCATE HVAC COMPONENTS AS REQUIRED TO RESOLVE INTERFERENCES.
- THE MECHANICAL CONTRACTOR SHALL COORDINATE WIRING REQUIREMENTS WITH THE ELECTRICAL CONTRACTOR, INCLUDING BUT NOT LIMITED TO VOLTAGE, PHASE, WIRE SIZES, CONTROL WIRING, STARTERS, SAFETY SWITCH DISCONNECTS, AND MOTOR OVERLOADS.
- PROVIDE SIX COPIES OF SHOP DRAWINGS AND INSTALLATION AND MAINTENANCE MANUALS.
- MAINTAIN UPDATED "AS-BUILT" DRAWINGS AT THE JOB SITE. PROVIDE AS-BUILT DRAWINGS TO THE CONSTRUCTION MANAGER AT THE COMPLETION OF THE PROJECT.

**PTAC SPECIFICATION (NO EXCEPTIONS):**

- PROVIDE TRANE PACKAGED TERMINAL AIR CONDITIONERS (PTAC) AS SHOWN.
- MODEL NUMBER: PTHF070 1 G AB - VERIFY WITH VENDOR.
- DESCRIPTION: HEAT PUMP PTAC WITH 3.5KW (MAX) ELECTRIC HEAT FOR USE WITH 230V/1PH/60HZ POWER SUPPLY
- PROVIDE 20 AMP POWER CORD ASSEMBLY # PWR00288
- COOLING CAPACITY: 7000 BTUH
- PROVIDE TRANE ACCESSORY WALL SLEEVE AND OUTDOOR GRILLE.
- PROVIDE TRANE PROSPACE REMOTE CONTROL



1 - HVAC Ductwork Plan  
3/8" = 1'-0"

A PROPOSED NEW CONSTRUCTION FOR  
THE AMERICAN LEGION PARK  
**GOLF HOUSE**  
841 N MILES ST  
ELIZABETHTOWN, KY 42701

REVISIONS

- ▲
- ▲
- ▲
- ▲
- ▲

DOCUMENT PHASE  
CONSTRUCTION  
DOCUMENTS  
DATE ISSUED  
8/15/2017

SHEET NAME  
MECHANICAL  
PLAN - HVAC

**M1.0**