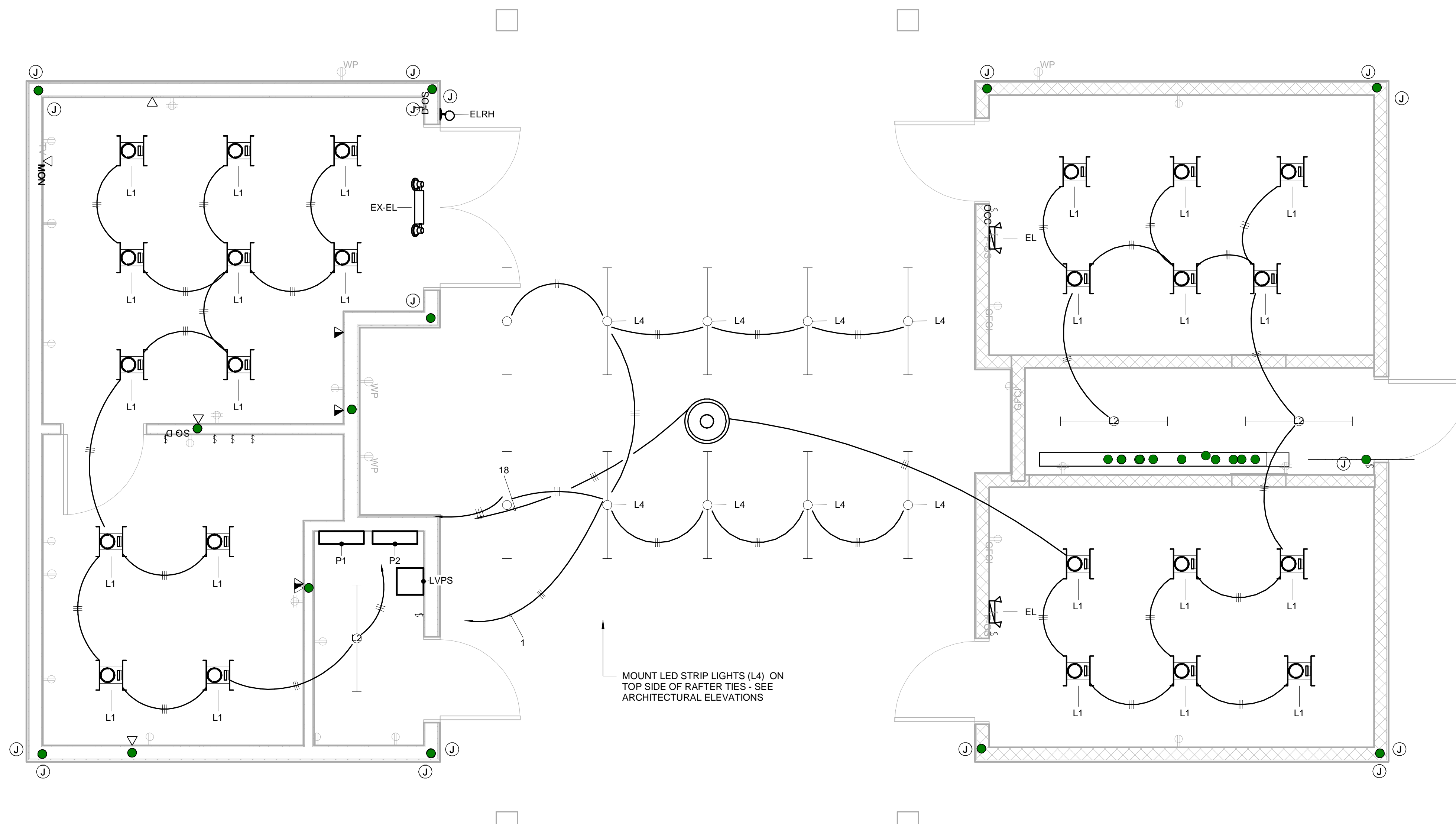


LIGHTING FIXTURE SCHEDULE							
Type Mark	Description	Manufacturer	Model	Luminous Flux	Electrical Data	Lamp	Panel
EL	Emergency Lighting	COOPER SURE-LITES			120 V/1-100 VA	LED	P1
ELRH	Emergency Lighting - Remote Heads	Cooper Industries, Inc.	Remote	2377 lm	12 V/1-9 VA	LED	
EX-EL	Exit Sign with Emergency Lighting	COOPER SURE-LITES		1380 lm	120 V/1-100 VA	LED	P1
L1	INSULATED CEILING	Cooper Industries, Inc.	AIR-TITE	1380 lm	120 V/1-19 VA	LED	P1
L2	2-LAMP LED STRIP LIGHT	COOPER LIGHTING - METALUX	SNLED	5800 lm	120 V/1-64 VA	LED	P1
L3	PENDANT DIRECT/INDIRECT LIGHT FIXTURE	Cooper Lighting		2780 lm	120 V/1-150 VA	LED	P1
L4	LOW VOLTAGE LED LIGHT BAR WITH PENDANT	SOLID STATE LUMINAIRES	BASELINE BL-4-4K120-P	2400 lm	12 V/1-32 VA	LED	P2

NOTE: ALL EXTERIOR LIGHT FIXTURES SHALL BE CONTROLLED WITH PHOTOCELLS FURNISHED BY CONTRACTOR -- COORDINATE WITH OWNER.



MOUNT LED STRIP LIGHTS (L4) ON TOP SIDE OF RAFTER TIES - SEE ARCHITECTURAL ELEVATIONS

- PENDANT CANOPY LIGHT FIXTURE
- EXTERIOR WALL PACK LIGHT FIXTURE
- RECESSED DOWNLIGHT
- EMERGENCY LIGHT
- EXIT SIGN WITH EMERGENCY LIGHT HEADS
- SINGLE POLE LIGHT SWITCH
- 3-WAY LIGHT SWITCH
- DIMMER - LIGHT SWITCH
- OCCUPANCY SENSOR - LIGHT SWITCH
- OCCUPANCY SENSOR - DIMMER SWITCH

○ LEGEND - ELECTRICAL LIGHTING  
1/8" = 1'-0"

① 1 - Lighting  
3/8" = 1'-0"

A PROPOSED NEW CONSTRUCTION FOR  
THE AMERICAN LEGION PARK  
**GOLF HOUSE**  
841 N MILES ST  
ELIZABETHTOWN, KY 42701

REVISIONS

- △
- △
- △
- △
- △

DOCUMENT PHASE  
CONSTRUCTION  
DOCUMENTS  
DATE ISSUED  
8/15/2017

SHEET NAME  
LIGHTING  
PLAN

E1.1