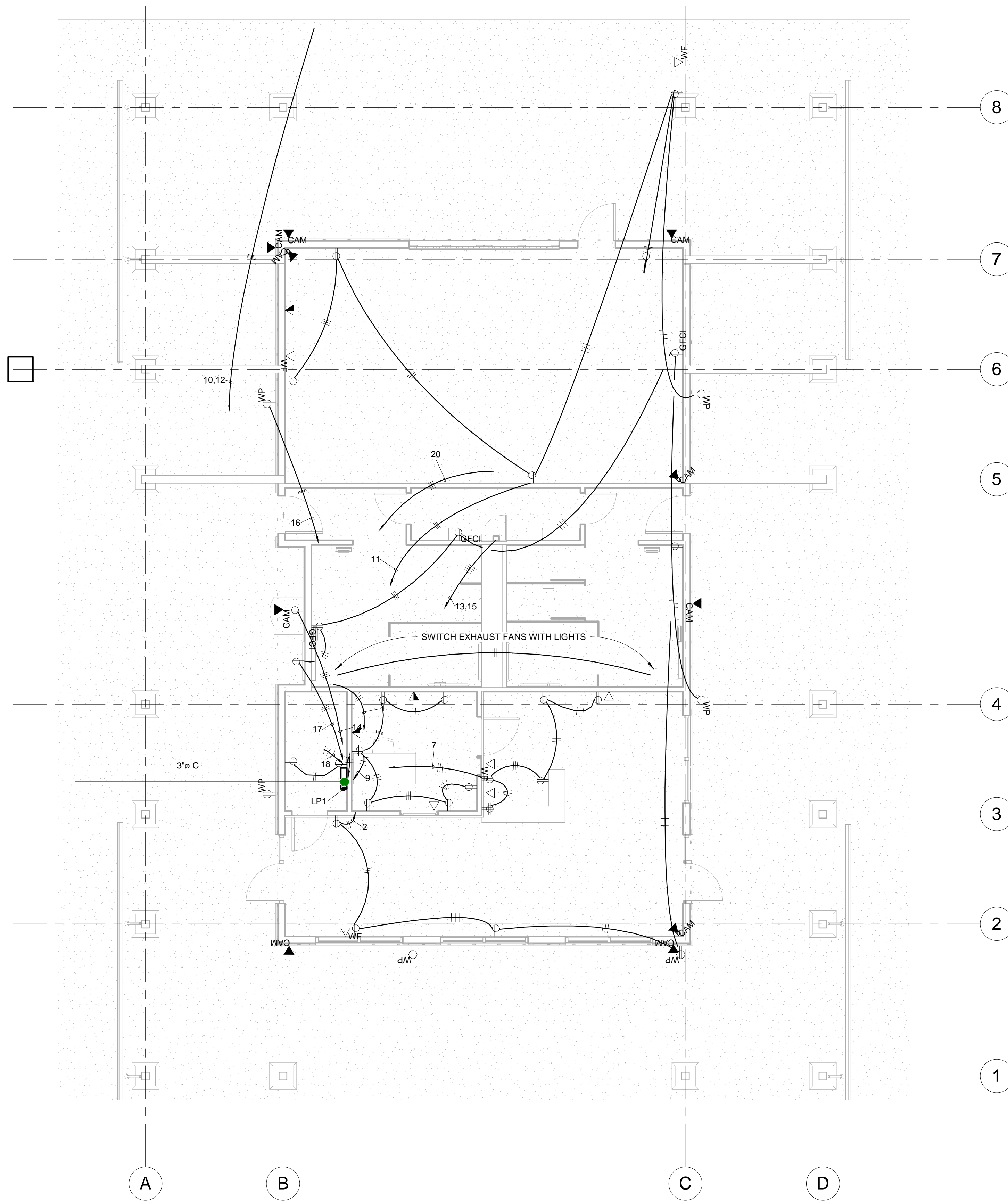


Branch Panel: LP1									
Location: ELECTRICAL 3				Volts: 120/240 Single				A.I.C. Rating: 14000	
Supply From:				Phases: 1				Mains Type: MCB	
Mounting: Surface				Wires: 3				Mains Rating: 225 A	
Enclosure:								MCB Rating: 200 A	
Notes:									
CKT	Circuit Description	Trip	Poles	A	B	Poles	Trip	Circuit Description	CKT
1	HVAC Room 5, 4	20 A	1	162 VA	900 VA		20 A	Receptacle LOBBY 1	2
3	Receptacle ELECTRICAL 3	20 A	1		360 VA	380 VA	1	20 A Lighting WAREHOUSE 7	4
5	Lighting - Dwelling Unit	20 A	1	576 VA	1200 VA		20 A	Lighting - Dwelling Unit	6
7	Receptacle LOBBY 1	20 A	1		1080 VA	1062 VA	1	20 A Room 4, 6, 5	8
9	Receptacle OFFICE 2	20 A	1	1260 VA	3750 VA		2	50 A HP OUTDOOR	10
11	Receptacle WAREHOUSE 7	20 A	1		1080 VA	3750 VA	--	--	12
13	Power JANITOR 6	20 A	2	4750 VA	180 VA		1	20 A Receptacle	14
15	--	--	--		4750 VA	180 VA	1	20 A Receptacle	16
17	Receptacle Room 4, 5, 6	20 A	1	900 VA	1000 VA		1	20 A FURNACE GF-1	18
19	Room 2	20 A	1		1028 VA	500 VA	1	20 A HVAC WAREHOUSE 7	20
21	Lighting - Dwelling Unit Room 5, 4, 1	20 A	1	900 VA					22
23									24
25									26
27									28
29									30
31									32
33									34
35	Spare	20 A	1		0 VA	0 VA	1	20 A Spare	36
37	Spare	20 A	1	0 VA	0 VA		1	20 A Spare	38
39	Spare	20 A	1		0 VA	0 VA	1	20 A Spare	40
41	Spare	20 A	1	0 VA	0 VA		1	20 A Spare	42
Total Load:				13056 VA		11493 VA			
Total Amps:				109 A		96 A			

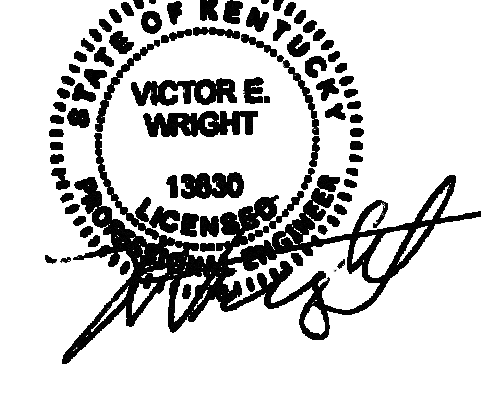
Load Classification	Connected Load	Demand Factor	Estimated Demand	Panel Totals	
HVAC	8886 VA	100.00%	8886 VA	Total Conn. Load:	24532 VA
Lighting - Dwelling Unit	4260 VA	80.77%	3441 VA	Total Est. Demand:	23869 VA
Lighting - Exterior	420 VA	125.00%	525 VA	Total Conn.:	102 A
Other	500 VA	100.00%	500 VA	Total Est. Demand:	99 A
Receptacle	5940 VA	100.00%	5940 VA		
Power	9500 VA	100.00%	9500 VA		
Lighting	380 VA	100.00%	380 VA		



1 1 - POWER
SCALE: 3/16" = 1'-0"

- 120V DUPLEX RECEPTACLE
- 120V QUADPLEX RECEPTACLE
- 220V (208V) SIMPLEX RECEPTACLE
- 120V DUPLEX GFCI RECEPTACLE
- WEATHERPROOF DUPLEX RECEPTACLE

LEGEND - ELECTRICAL POWER WIRING



BID DOCUMENTS
FREEMAN LAKE PARK OFFICE
ELIZABETHTOWN, KY 42701



ELECTRICAL	
PROJECT	2016-1340
DATE	8/18/2017
DRAWN	VW
CHECKED	VW
REVISIONS	
No.	Description

ICON ENGINEERING AND INSPECTION SERVICES, PLLC HAS RETAINED AN ELECTRONIC VERSION OF THESE DRAWINGS. THE CLIENT AGREES NOT TO REPRODUCE, REUSE, OR COPY THESE DRAWINGS IN ELECTRONIC OR ANY OTHER FORMAT. IN WHOLE OR IN PART, FOR ANY PURPOSE OTHER THAN FOR THE SPECIFIC PROJECT LOCATION NOTED IN THE PROJECT TITLE BLOCK. THE CLIENT AGREES NOT TO TRANSFER THESE ELECTRONIC FILES TO OTHERS WITHOUT THE PRIOR WRITTEN CONSENT OF ICON ENGINEERING AND INSPECTION SERVICES, PLLC. THE CLIENT FURTHER AGREES TO WAIVE ALL CLAIMS AGAINST ICON ENGINEERING AND INSPECTION SERVICES, PLLC RESULTING IN ANY WAY FROM ANY UNAUTHORIZED CHANGES TO OR REUSE OF THE ELECTRONIC FILES FOR ANY OTHER PROJECT BY ANYONE OTHER THAN ICON ENGINEERING AND INSPECTION SERVICES, PLLC.

ELECTRICAL POWER PLAN
E-101