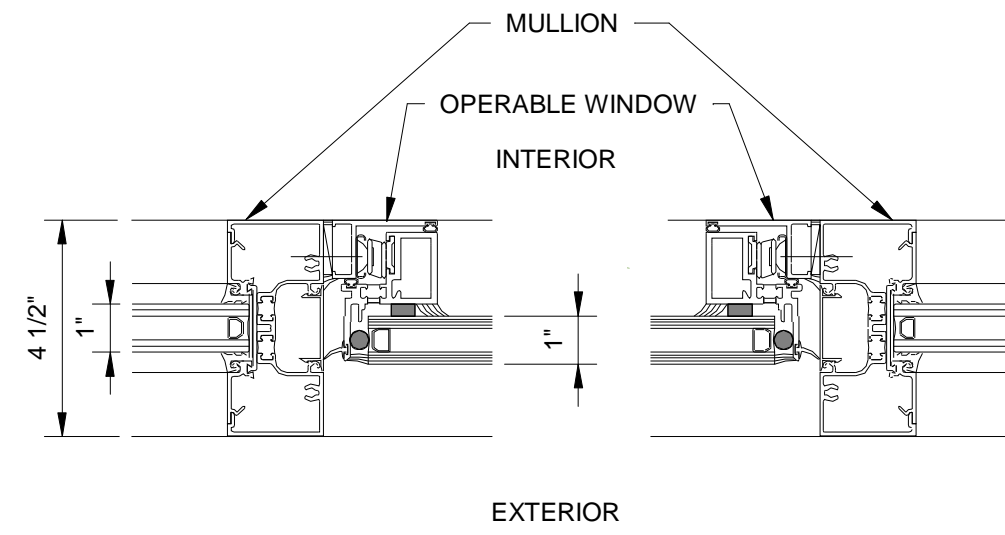
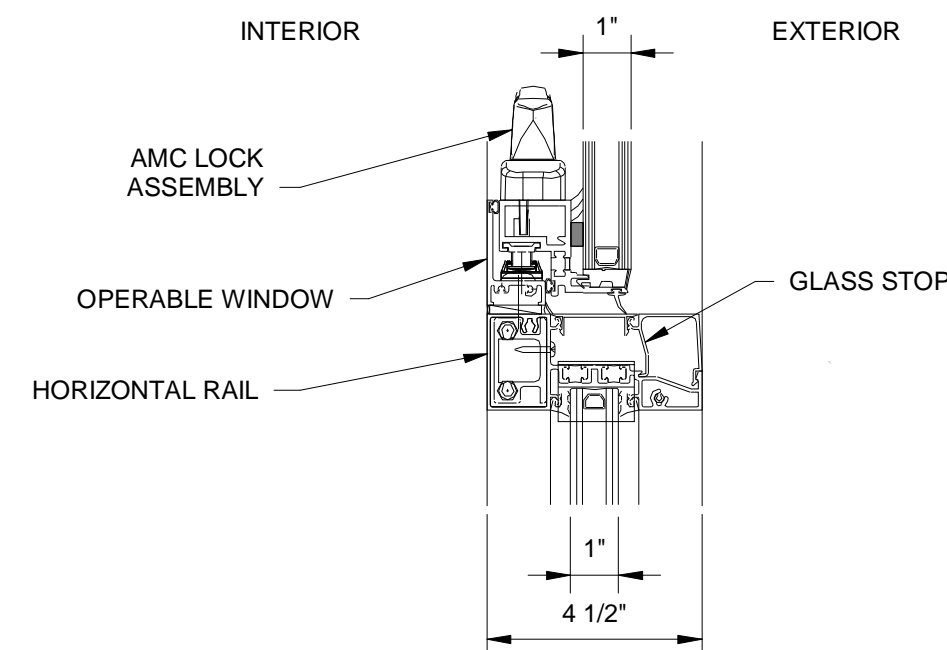


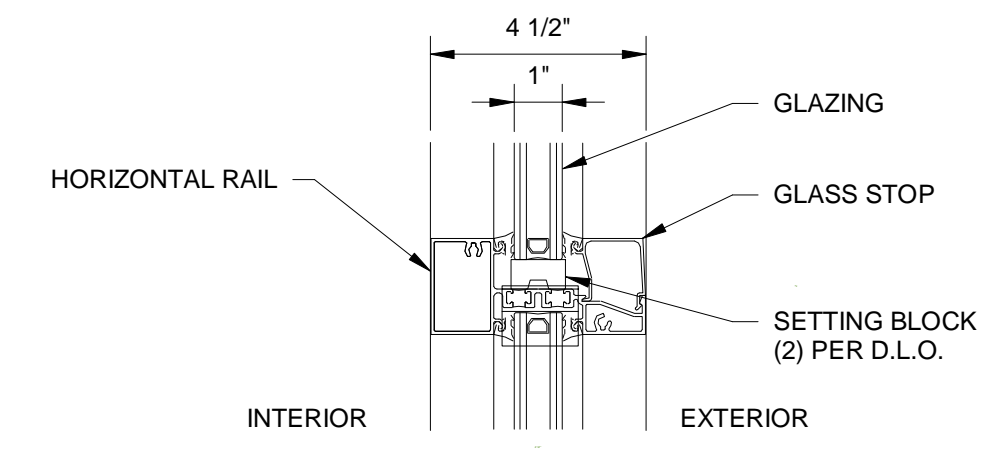
1 OPERABLE WINDOW HEAD DETAIL
A-500 SCALE: 3" = 1'-0"



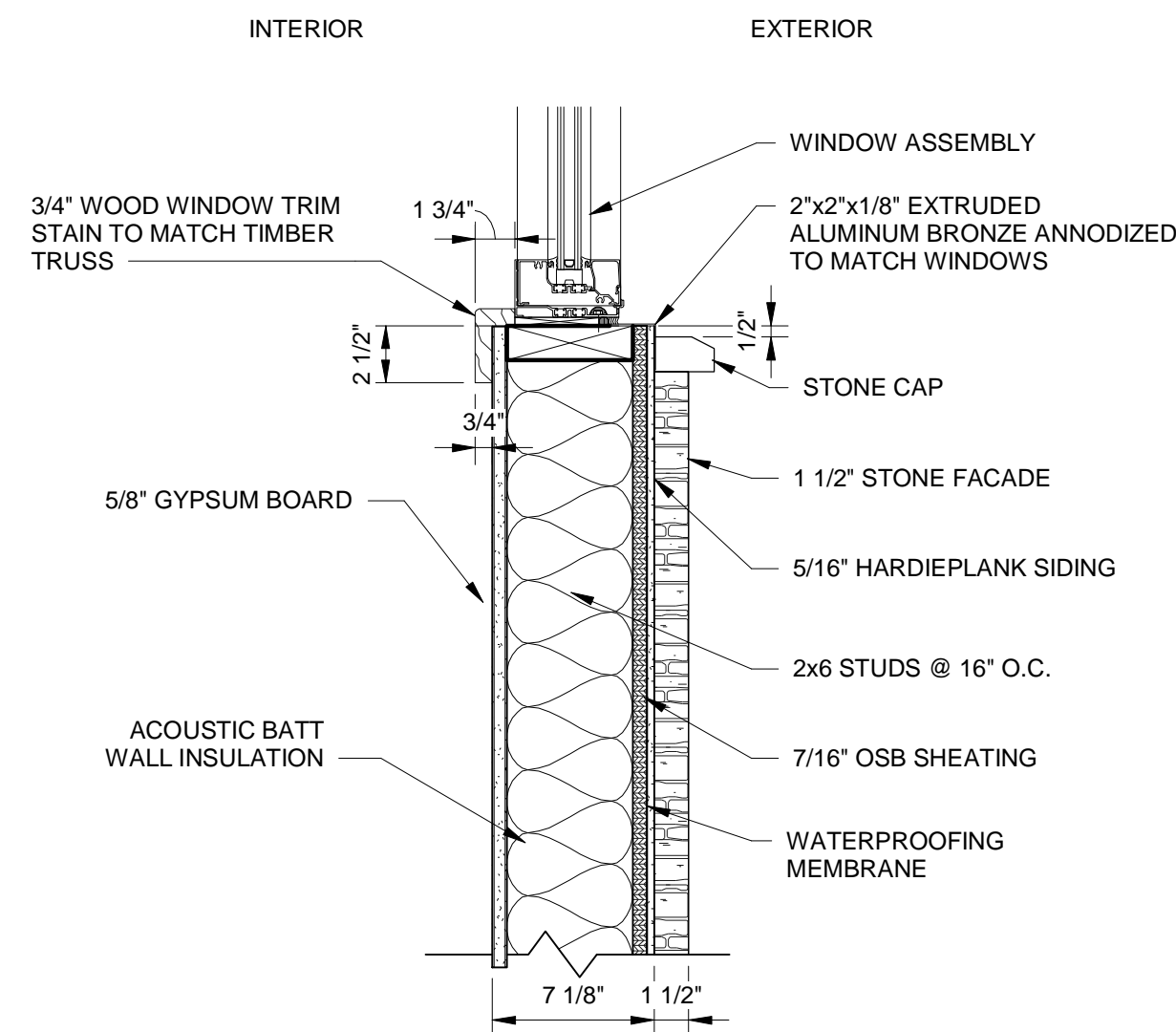
2 OPERABLE WINDOW JAMB
A-500 SCALE: 3" = 1'-0"



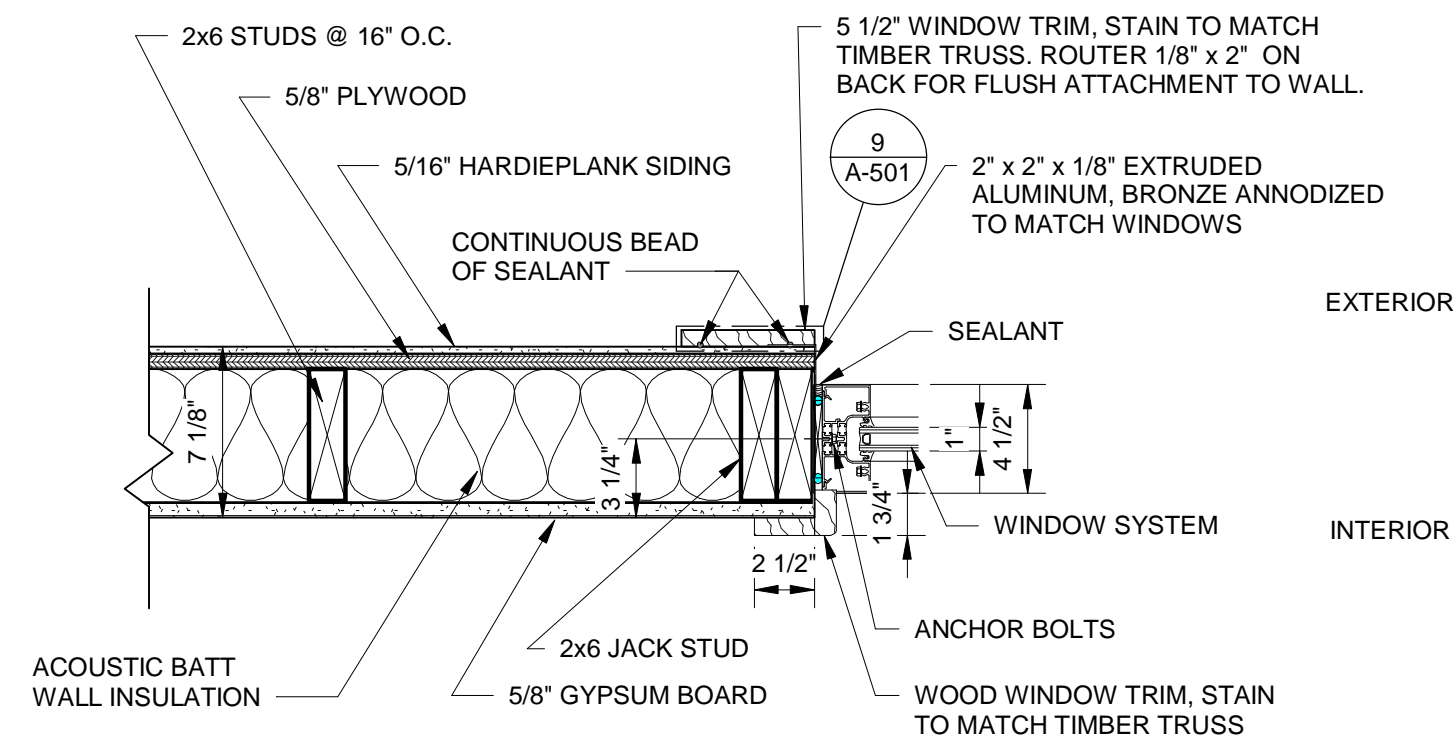
3 OPERABLE WINDOW SILL DETAIL
A-500 SCALE: 3" = 1'-0"



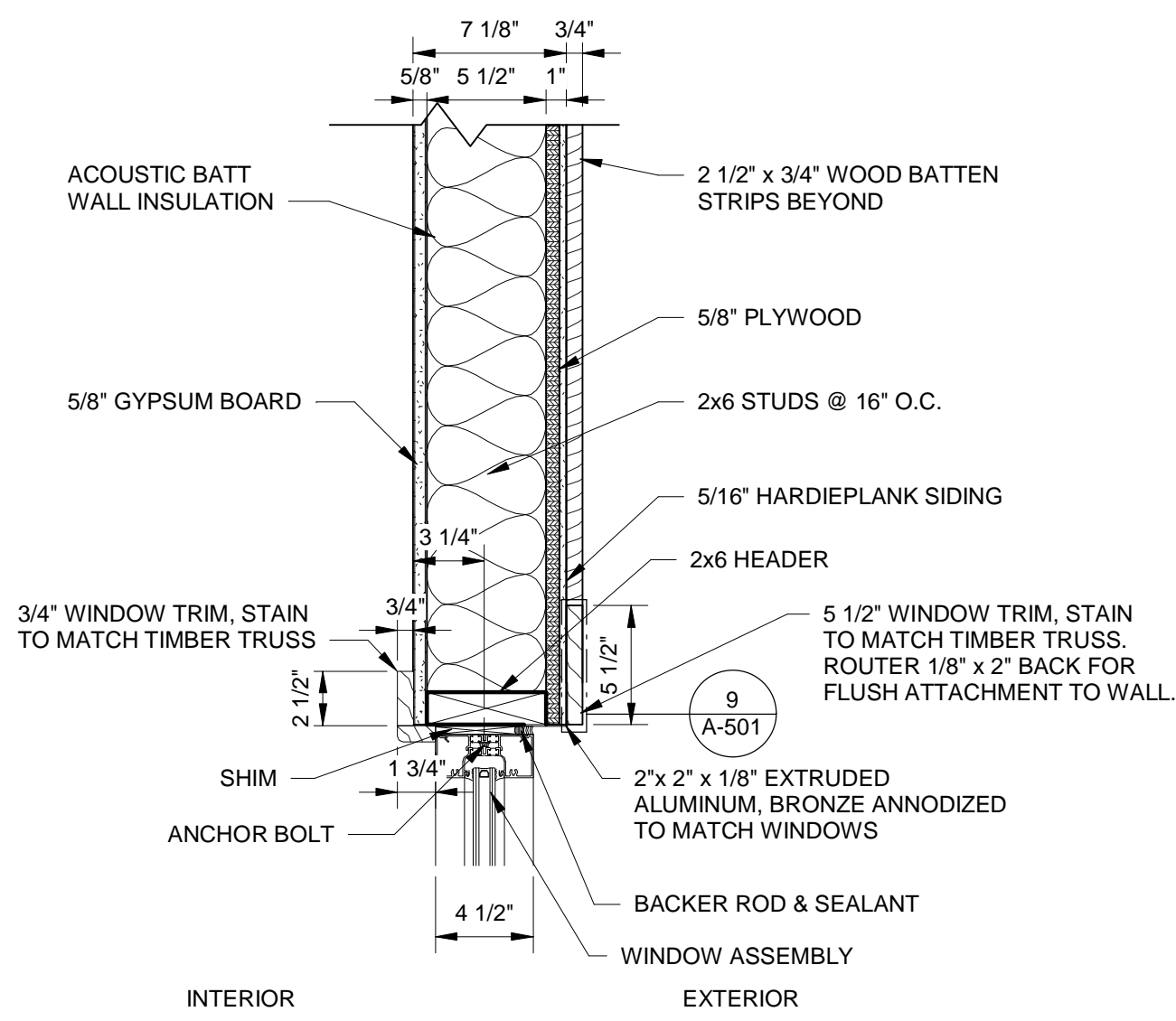
4 WINDOW DETAIL AT INTERMEDIATE HORIZONTAL
A-500 SCALE: 3" = 1'-0"



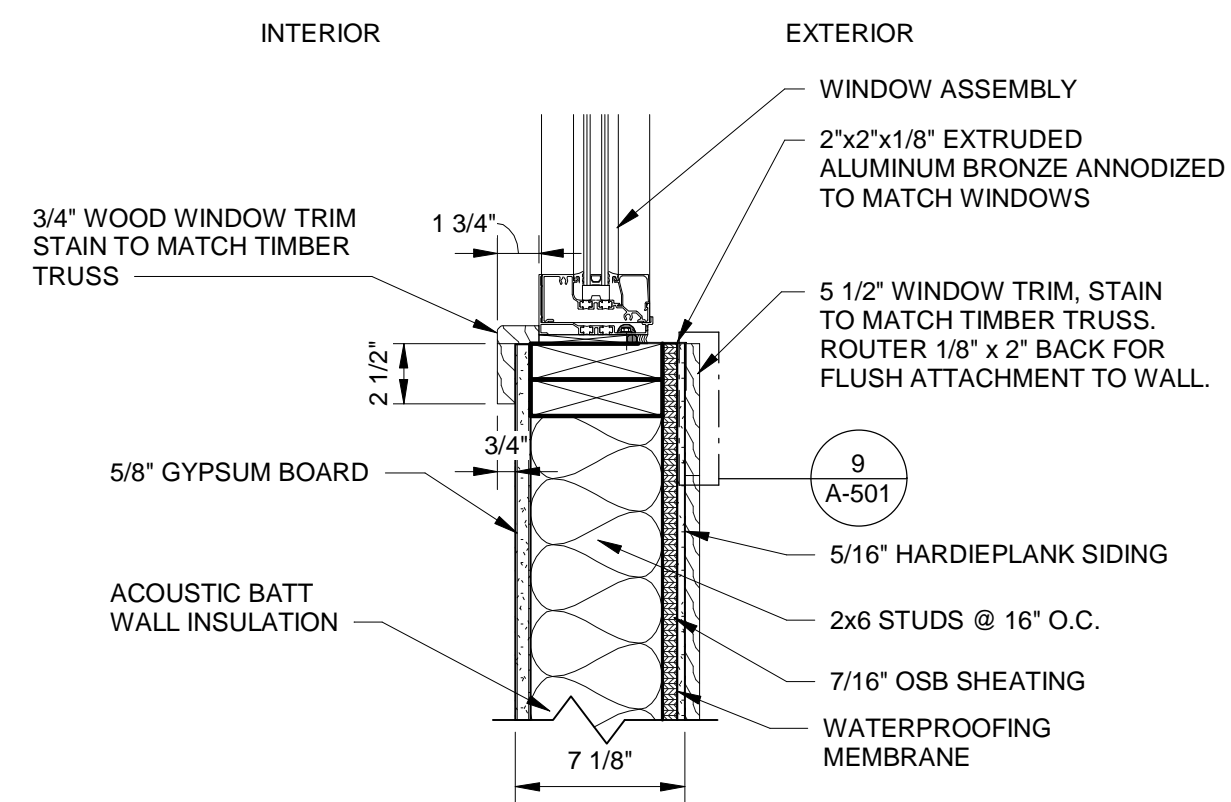
5 WINDOW SILL DETAIL
A-304 SCALE: 1 1/2" = 1'-0"



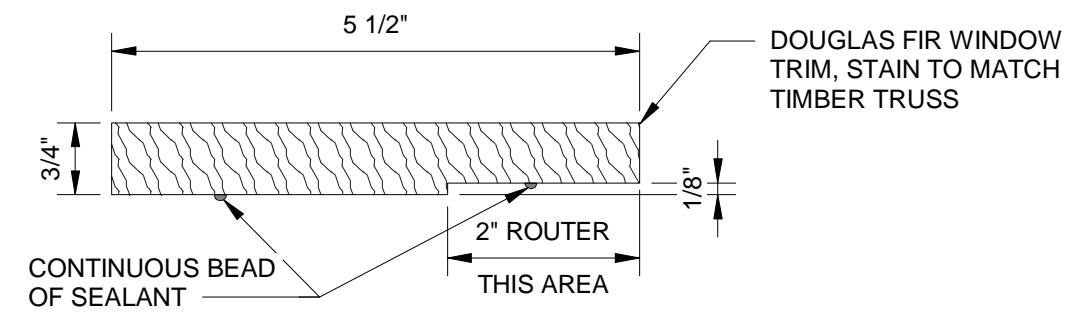
6 WINDOW JAMB DETAIL
A-500 SCALE: 1 1/2" = 1'-0"



7 WINDOW HEAD DETAIL
A-304 SCALE: 1 1/2" = 1'-0"



8 UPPER WINDOW SILL DETAIL
A-304 SCALE: 1 1/2" = 1'-0"



9 5 1/2" WINDOW TRIM DETAIL
A-501 SCALE: 6" = 1'-0"



ARCHITECTURAL

PROJECT	2016-1340
DATE	8/18/2017
DRAWN	LEA
CHECKED	MSC

NO.	DATE	DESCRIPTION

ICON ENGINEERING AND INSPECTION SERVICES, PLLC HAS RETAINED AN ELECTRONIC VERSION OF THESE DRAWINGS. THE CLIENT AGREES NOT TO REPRODUCE, REUSE, OR COPY THESE DRAWINGS IN ELECTRONIC OR ANY OTHER FORMAT IN WHOLE OR IN PART FOR ANY PURPOSE OTHER THAN FOR THE SPECIFIC PROJECT LOCATION NOTED IN THE PROJECT TITLE BLOCK. THE CLIENT AGREES NOT TO TRANSFER THESE ELECTRONIC FILES TO OTHERS WITHOUT THE PRIOR WRITTEN CONSENT OF ICON ENGINEERING AND INSPECTION SERVICES, PLLC. THE CLIENT FURTHER AGREES TO WAIVE ALL CLAIMS AGAINST ICON ENGINEERING AND INSPECTION SERVICES, PLLC RESULTING IN ANY WAY FROM ANY UNAUTHORIZED CHANGES TO OR REUSE OF THE ELECTRONIC FILES FOR ANY OTHER PROJECT BY ANYONE OTHER THAN ICON ENGINEERING AND INSPECTION SERVICES, PLLC.

WINDOW DETAILS

A-501