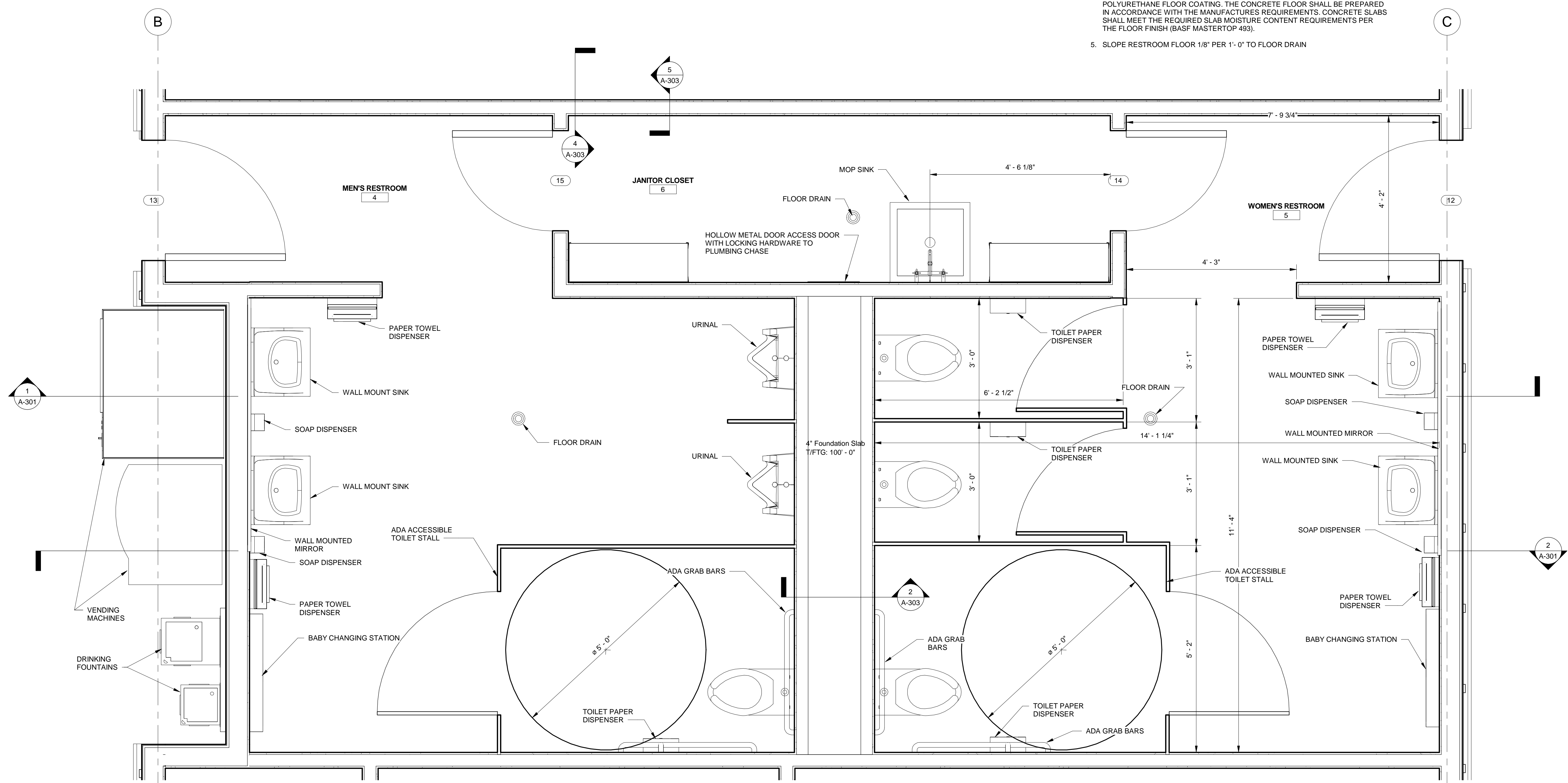




**RESTROOM NOTES**

1. PROVIDE BLOCKING IN WALLS FOR PARTITIONS, GRAB BARS, AND SINKS
2. WALL BOARD SHALL BE GOLD BOND BRAND HI-IMPACT XP FIRE-SHIELD GYPSUM BOARD, TYPE X, 5/8", FINISH PAINTED WITH SATIN FINISH EPOXY, COLOR BY OWNER
3. PROVIDE 3/4" X 5 1/2" HARDIEBOARD BASE TRIM, SMOOTH FINISH, WITH 1/4" ROUTERD EDGE. SEAL JOINT AT FLOOR INTERFACE WITH URETHANE SEALANT COMPATIBLE WITH FLOOR FINISH FOR TOP COATING THE SEALANT. FINISH PAINT/COAT WITH THE BASF MASTERTOP TC 493. MULTIPLE COATS WILL BE REQUIRED ON THE VERTICAL SURFACE OF THE BASE TRIM TO ACHIEVE A FINISH TO MATCH THE FLOOR.
4. FLOOR FINISH SHALL BE BASF MASTERTOP TC 493 CHEMICAL RESISTANT POLYURETHANE FLOOR COATING. THE CONCRETE FLOOR SHALL BE PREPARED IN ACCORDANCE WITH THE MANUFACTURERS REQUIREMENTS. CONCRETE SLABS SHALL MEET THE REQUIRED SLAB MOISTURE CONTENT REQUIREMENTS PER THE FLOOR FINISH (BASF MASTERTOP 493).
5. SLOPE RESTROOM FLOOR 1/8" PER 1'-0" TO FLOOR DRAIN



**1 ENLARGED DETAIL - WOMEN'S RESTROOM**  
 SCALE: 3/4" = 1'-0"

**BID DOCUMENTS**  
**FREEMAN LAKE PARK OFFICE**  
 ELIZABETHTOWN, KY 42701



ARCHITECTURAL	
PROJECT	2016-1340
DATE	8/18/2017
DRAWN	LEA
CHECKED	MSC

NO.	DATE	DESCRIPTION

ICON ENGINEERING AND INSPECTION SERVICES, PLLC HAS RETAINED AN ELECTRONIC VERSION OF THESE DRAWINGS. THE CLIENT AGREES NOT TO REPRODUCE, REUSE, OR COPY THESE DRAWINGS IN ELECTRONIC OR ANY OTHER FORMAT IN WHOLE OR IN PART FOR ANY PURPOSE OTHER THAN FOR THE SPECIFIC PROJECT LOCATION NOTED IN THE PROJECT TITLE BLOCK. THE CLIENT AGREES NOT TO TRANSFER THESE ELECTRONIC FILES TO OTHERS WITHOUT THE PRIOR WRITTEN CONSENT OF ICON ENGINEERING AND INSPECTION SERVICES, PLLC. THE CLIENT FURTHER AGREES TO WAIVE ALL CLAIMS AGAINST ICON ENGINEERING AND INSPECTION SERVICES, PLLC RESULTING IN ANY WAY FROM ANY UNAUTHORIZED CHANGES TO OR REUSE OF THE ELECTRONIC FILES FOR ANY OTHER PROJECT BY ANYONE OTHER THAN ICON ENGINEERING AND INSPECTION SERVICES, PLLC.

**ENLARGED DETAILS**  
**A-400**  
 © 2017 ICON ENGINEERING