

FREEMAN LAKE PARK OFFICE

ELIZABETHTOWN, KY 42701

BID DOCUMENTS

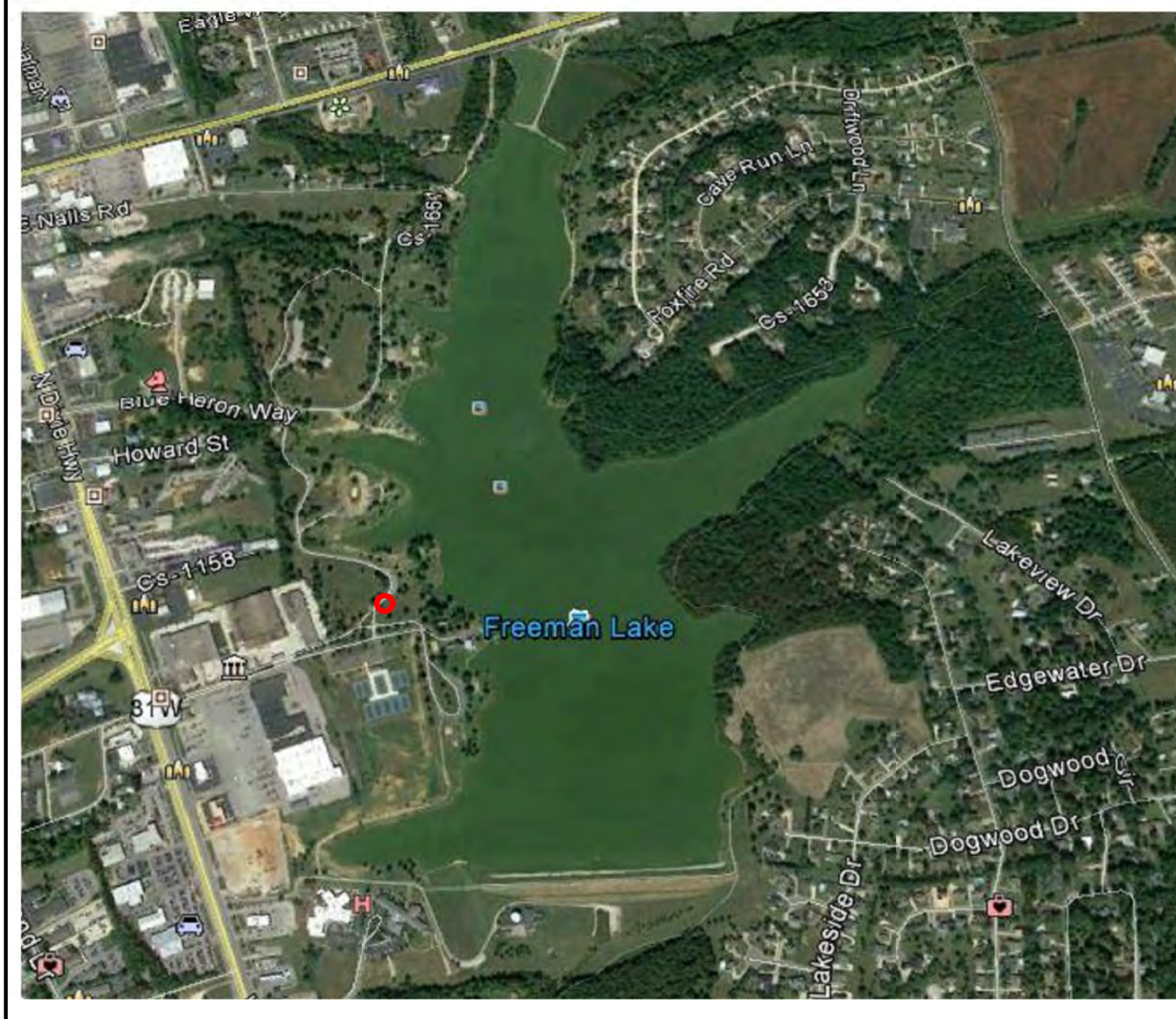
8/18/2017



BID DOCUMENTS
FREEMAN LAKE PARK OFFICE
ELIZABETHTOWN, KY 42701



LOCATION MAP



DRAWING INDEX

- STRUCTURAL**
- S-000 - GENERAL NOTES
 - S-100 - FOUNDATION PLAN
 - S-101 - FRAMING PLAN
 - S-200 - CONCRETE DETAILS
 - S-201 - TIMBER TRUSS DETAILS
 - S-300 - STRUCTURAL 3-D VIEW
- ARCHITECTURAL**
- A-100 - FLOOR PLAN
 - A-101 - REFLECTED CEILING PLAN
 - A-102 - ROOF PLAN
 - A-200 - ELEVATIONS
 - A-201 - ELEVATIONS
 - A-300 - BUILDING SECTIONS
 - A-301 - BUILDING SECTIONS
 - A-302 - BUILDING SECTIONS
 - A-303 - INTERIOR WALL SECTIONS
 - A-304 - EXTERIOR WALL SECTIONS
 - A-400 - ENLARGED DETAILS
 - A-500 - WINDOW ELEVATIONS & DETAILS
 - A-501 - WINDOW DETAILS
 - A-502 - DOOR ELEVATIONS & DETAILS
 - A-503 - ACCESSORY DETAILS
 - A-600 - SCHEDULES & DIAGRAMS
 - A-700 - 3-D VIEWS
- MECHANICAL**
- M-100 - HVAC PLAN
 - M-600 - MECHANICAL SCHEDULES
- ELECTRICAL**
- E-100 - ELECTRICAL PLAN
 - E-101 - ELECTRICAL POWER PLAN
 - E-102 - DATA-COMM PLAN
 - E-600 - ELECTRICAL DETAILS
 - E-600 - ELECTRICAL NOTES AND SCHEDULES
- PLUMBING**
- P-100 - PLUMBING PLAN
 - P-600 - PLUMBING SCHEDULE
 - P-900 - PLUMBING ISOMETRIC SCHEDULE

CODE DATA

USE GROUP CLASSIFICATION:
MIXED OCCUPANCY - NONSEPARATED;
S-1 MODERATE HAZARD STORAGE B - BUSINESS
IECC 2012 SECTION 502.4.7 VESTIBULES - EXCEPTION 4
(SPACE LESS THAN 3,000 SQ. FT.)

CONSTRUCTION TYPE:
TYPE V-B

BUILDING AREA:
ALLOWABLE AREA FOR GROUP B, TYPE V-B, NON-SPRINKLED
(PER TABLE 503, 2013 KBC/2012 IBC): 9000 SF

TOTAL GROSS SF: 1840 SF

STORAGE: 598 SF

OFFICE/RESTROOMS: 1050 SF

GENERAL

PROJECT	2016-1340
DATE	8/18/2017
DRAWN	LEA
CHECKED	MSC

NO.	DATE	DESCRIPTION

ICON ENGINEERING AND INSPECTION SERVICES, PLLC HAS RETAINED AN ELECTRONIC VERSION OF THESE DRAWINGS. THE CLIENT AGREES NOT TO REPRODUCE, REUSE, OR COPY THESE DRAWINGS, IN ELECTRONIC OR ANY OTHER FORMAT, IN WHOLE OR IN PART, FOR ANY PURPOSE OTHER THAN FOR THE SPECIFIC PROJECT LOCATION NOTED IN THE PROJECT TITLE BLOCK. THE CLIENT AGREES NOT TO TRANSFER THESE ELECTRONIC FILES TO OTHERS WITHOUT THE PRIOR WRITTEN CONSENT OF ICON ENGINEERING AND INSPECTION SERVICES, PLLC. THE CLIENT FURTHER AGREES TO WAIVE ALL CLAIMS AGAINST ICON ENGINEERING AND INSPECTION SERVICES, PLLC RESULTING IN ANY WAY FROM ANY UNAUTHORIZED CHANGES TO OR REUSE OF THE ELECTRONIC FILES FOR ANY OTHER PROJECT BY ANYONE OTHER THAN ICON ENGINEERING AND INSPECTION SERVICES, PLLC.

COVER SHEET

G-000